

## TR-CONTROL-6

### Addressable Notification Module

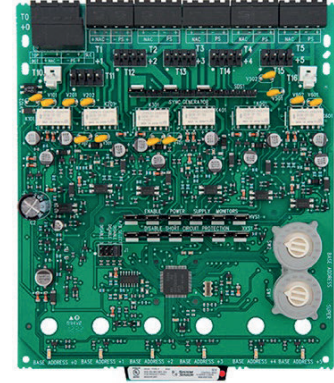
The TR-CONTROL-6 is an addressable notification module for use with the Triga Series fire alarm control panels (FACPs). The TR-CONTROL-6 has six integrated modules for maximum flexibility, allowing you to add notification circuits wherever they are needed on an FACP signaling line circuit (SLC) loop.

The TR-CONTROL-6 provides supervised monitoring of wiring to load devices that require an external power supply or amplifier to operate, such as bells, horns, and strobes. It is capable of supporting Class B and Class A wiring.

Upon command from the FACP, the TR-CONTROL-6 will disconnect the supervision and connect the external power supply across the load device. The disconnection of the supervision provides a positive indication to the panel that the control relay actually turned on. The external power supply is always relay isolated from the SLC loop, so that a trouble condition on the power supply will never interfere with the rest of the system.

If needed, you can disable a maximum of three unused modules on the TR-CONTROL-6 board. Each module has terminals for connection to an external supply circuit for powering devices on its notification appliance circuit (NAC). One or more multiple power supplies can be used.

The TR-CONTROL-6 has a short circuit protection monitor for each module. The short circuit protection monitor protects external power supplies against short circuit conditions on the NAC. In addition, an algorithm is incorporated to find a short when the module is active. The module will close all circuits that are not shorted to find the NAC with the problem.



**TR-CONTROL-6**

## FEATURES & BENEFITS

- Flexible solution for adding notification circuits where needed
- Removable 12 to 18 AWG plug-in terminal blocks
- Support for Class B or Class A wiring
- Individual LED for each module
- Two module mounting in the TR-IDP-ACB cabinet
- Unused modules can be disabled
- Rotary address switches for fast installation
- Mounting hardware included
- UL Listed
- FM Approved



## Technical Specifications

### PHYSICAL

**Dimensions:** 6.8"H x 5.8"W x 1.25"D

**Shipping Weight:** 6.3oz (196g)

### ELECTRICAL RATINGS

**Operating Voltage:** 15 to 32VDC

**Standby Current:** 2.65mA @ 24V

**Alarm Current:** 35mA maximum (assumes all six relays have been switched once and all six LEDs solid on)

**End-of-Line Resistance:** 47kW

**Maximum SLC Wiring Resistance:** 41W

**Maximum NAC Wiring Resistance:** 40W

### ENVIRONMENTAL

**Operating Temperature:** 32°-120°F (0°C - 49°C)

**Humidity:** 10 to 85% non-condensing)

### ORDERING INFORMATION

**TR-CONTROL-6:** Six Input notification module

### ACCESSORIES

**TR-IDP-ACB:** Cabinet. 15.25" H x 12.5" W x 3"D

### INSTALLATION

The TR-CONTROL-6 mounts in the Triga TR-IDP-ACB cabinet . The TR-IDP-ACB has a built-in chassis that will accommodate one or two TR-Control-6 modules.

### COMPATIBILITY

The TR-CONTROL-6 is compatible with the following Triga Series FACPs:

- TR-2100R / ITR-2100B
- TR-2100ECSR / TR-2100ECSB
- TR-R2100R / TR-R2100B

This document is not intended to be used for installation purposes. We try to keep our product information up-to date and accurate. We cannot cover all specific applications or anticipate all requirements. All specifications are subject to change without notice.

**TRIGA Life Safety Systems, LLC**  
7600 Olde Eight Rd, Hudson, Ohio, United States of America  
Tel : +1 330-577-5199, Email: info@trigaglobal.com