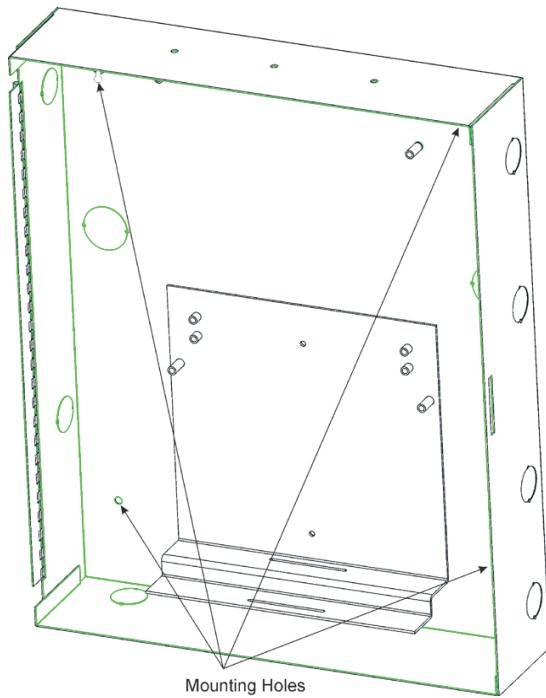


TR-ACB

Module Mounting Cabinet

The TR-ACB cabinet provides mounting space for two modules.

Note: Installation and wiring of this device must be done in accordance with NFPA 72 and local ordinances.



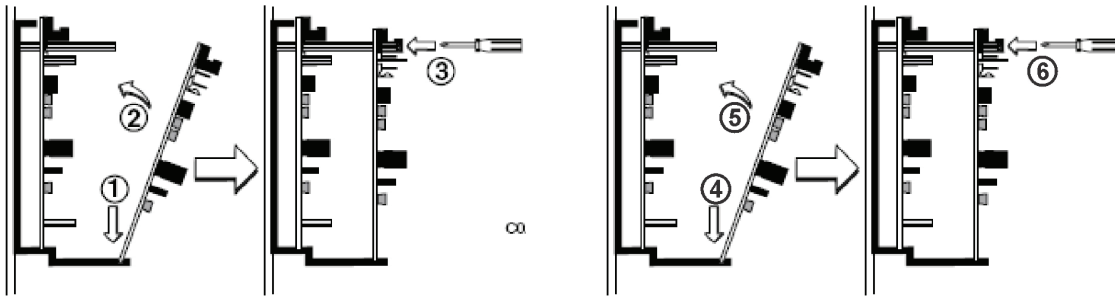
TR-ACB

Mounting the TR-ACB using four mounting holes in a dry, indoor location. All mounting hardware is included with TRIGA modules.

FEATURES & BENEFITS

- Has a built-in mounting plate that positions the module boards so that all of the status indicators are visible.
- One to two module mounting in cabinet
- UL Listed

Technical Specifications



INSTALLING MODULES

This document is not intended to be used for installation purposes. We try to keep our product information up-to-date and accurate. We cannot cover all specific applications or anticipate all requirements. All specifications are subject to change without notice.

PHYSICAL

Dimensions: 12.5" W x 15.25" H x 3" D

(31.8cm W x 38.7cm H x 7.6cm D)

Weight: 6.25 lbs (2.8kg)

ORDERING INFORMATION

TR-ACB: TRIGA module cabinet

COMPATIBILITY

The TR-ACB will accommodate one or two of the following modules:

- TR-MONITOR-10
- TR-ZONE-6
- TR-RELAY-6
- TR-CONTROL-6

TRIGA Life Safety Systems, LLC
7600 Olde Eight Rd, Hudson, Ohio, United States of America
Tel : +1 330-577-5199, Email: info@trigaglobal.com