



**TRIGA Life Safety Systems, LLC**  
7600 Olde Eight Rd, Hudson, Ohio, 44236-1057  
Tel: +1 330-577-5199, Email: info@trigaglobal.com

The TR-ACB cabinet provides mounting space for two Triga multi-modules.



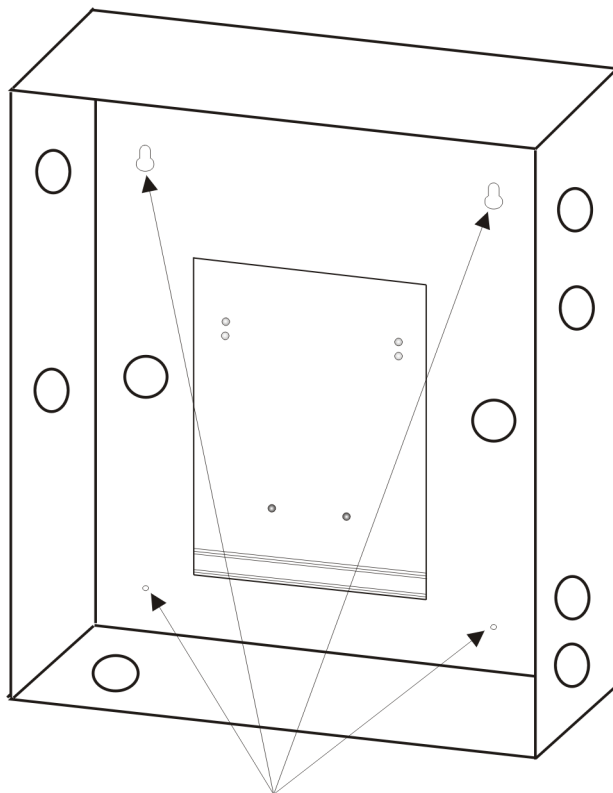
**NOTE:** Installation and wiring of this device must be done in accordance with NFPA 72 and local ordinances.

## 1 Specifications

- Mounting: surface
- Dimensions: 12.5" W x 15.25" H x 3.0" D  
(31.8cm W x 38.7cm H x 7.6cm D)
- Weight: 6.25lbs (2.8kg)

## 2 Mounting

Mount the TR-ACB using the four mounting holes as shown below in a dry, indoor location.



Mounting Holes  
**Figure 1 Mounting the TR-ACB**

Scan the QR Code or enter the URL for supporting documentation.



[www.trigaglobal.com](http://www.trigaglobal.com)

# TR-ACB Product Installation Document

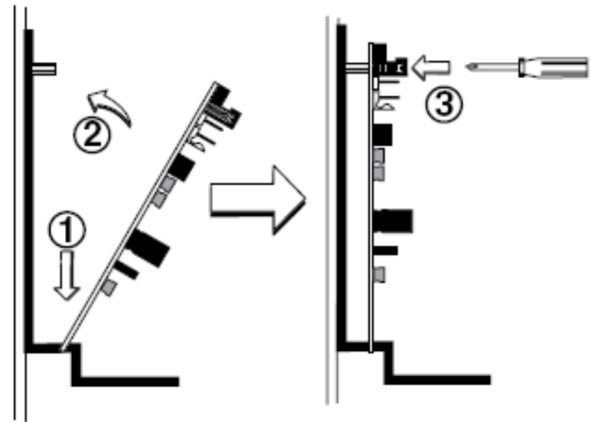
PN LS10300-002TR-E:A 2/22/2021 ECN: 151608

## 3 Installing Modules

The mounting process for Triga multi-modules is described below. All mounting hardware is included with Triga multi-modules.

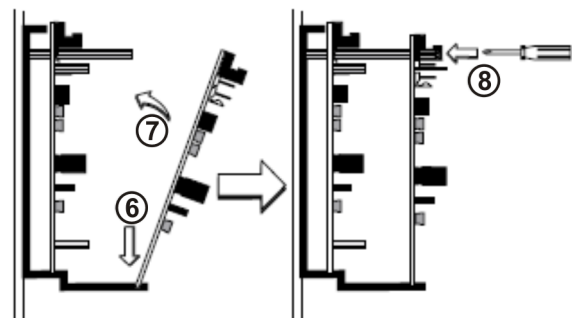
### To install Triga Multi-Modules in the TR-ACB

1. Insert the extended lip of the module into the rear slot on the mounting plate. Figure 2 illustrates steps 1 through 3.



**Figure 2 Installing the First Triga Multi-Module**

2. Carefully swing the lower edge of the board toward the back of the cabinet until it touches the two standoffs.
3. Go to step 5 if you are mounting a second module into the TR-ACB. If mounting only one module, align two 4-40 screws with the two standoffs and tighten.
4. Address and wire the module as described in the compatible fire alarm control panel installation manual.
5. Align the long standoffs with the short standoffs and tighten.
6. Insert the lip of the second module board into the front slot on the mounting plate. Figure 3 illustrates steps 6 through 8.



**Figure 3 Installing the Second Triga Multi-Module**

7. Carefully swing the module board toward the back of the cabinet until it touches the 1.25" (31.75 mm) standoffs installed on the rear module.
8. Align two 4-40 screws with the two standoffs and tighten.
9. Address and wire the module as described in the compatible fire alarm control panel installation manual.