

1 Description

The TR-SW24 adds 24 additional switches to the Triga Series, ECS Series controls. This provides a total of 40 switches (with the TR-RVM).



NOTE: The installation and wiring of this device shall be performed in accordance with the NFPA 72 and the local ordinances.

1.1 Compatibility

Use the TR-SW24 with the compatible Triga Series, Fire Alarm Control Panels, (FACP's). For additional information, refer to the following FACP Installation Manuals. The documents are located on the Triga website, www.trigaglobal.com.

Document	Document Part Number
TR-2100ECSR Manual	LS10143-003TR-E
TR-RPS1 Manual	LS10259-002TR-E
Triga ECS Manual	LS10262-002TR-E

2 Mounting

To install the TR-SW24, refer to the following steps.

1. Open the cabinet door and the dead front panel.
2. Remove the AC power from the main control panel.
3. Disconnect the backup batteries.
4. Install the TR-SW24 on the mounting studs located on the inside of the dead front panel on the TR-2100ECSR. Refer to Figure 1.
 The TR-2100ECSR can hold up to two TR-SW24's, See Figure 2.
5. Use the supplied 1/4" (.635cm) hex nuts to secure the switch expander(s) to the dead front panel.

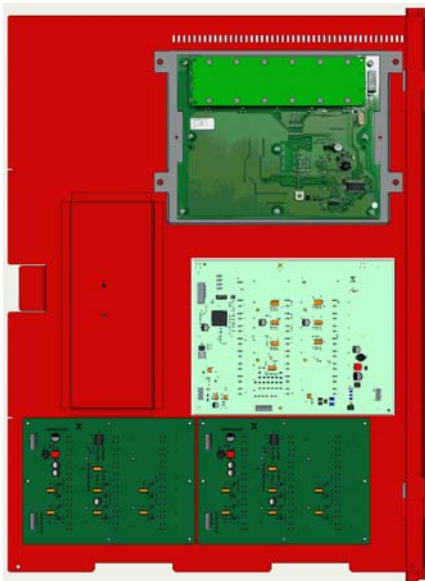


Figure 1 TR-2100ECSR Mounting Location for the TR-SW24

3 Wiring

1. Connect one end of the supplied wiring harness (P/N 130398) to the TR-NVCM.
2. Connect the other end of the wiring harness to the TR-SW24 as shown in Figure 2.
3. For the TR-2100ECSR, connect the one end of the supplied wiring harness (P/N 130398) to the RVM.
4. Connect the other end of the wiring harness to the TR-SW24.
5. Then, connect one TR-SW24 to the other TR-SW24 as shown in Figure 2.

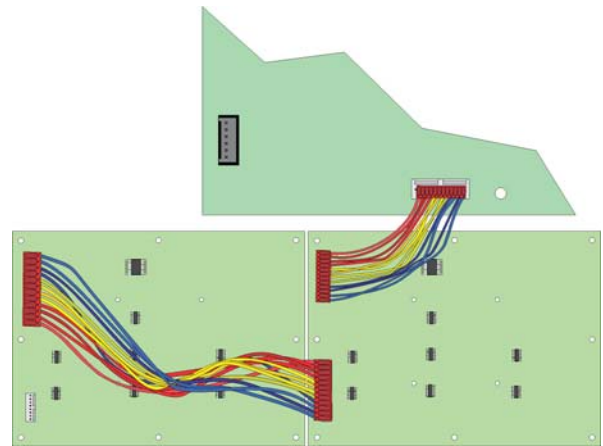


Figure 2 TR-2100ECSR Wiring Harness Connection

6. Restore the AC power.
7. Reconnect the backup batteries.
8. For the TR-2100ECSR connection, using the TR-NVCM, connect the TR-NVCM (P3) connector to the EMG touchpad.
 To properly connect the TR-NVCM to the EMG, refer to Figure 3.

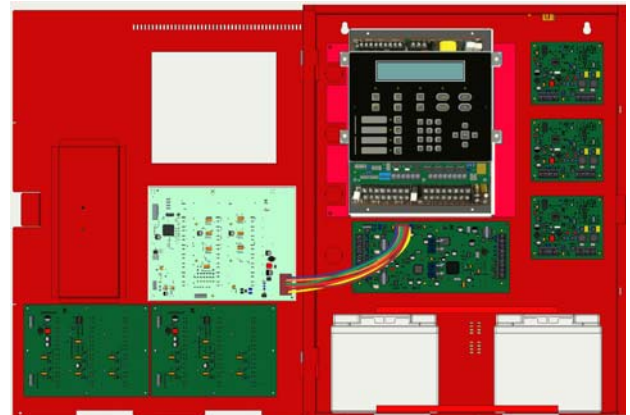


Figure 3 TR-NVCM Connection to the EMG Touchpad