



**TRIGA Life Safety Systems, LLC**  
 7600 Olde Eight Rd, Hudson, Ohio, 44236-1057  
 Tel: +1 330-577-5199, Email: info@trigaglobal.com

# TR-125W Product Installation Document

PN LSL10003-003TR-E:A 02/03/21 ECN: 151608

## 1 Description

The TR-125WTR is a 125 Watt amplifier used with the Triga, Emergency Communication System. The Installation Instructions provide information on how to install the TR-125W.



**NOTE 1:** The installation and wiring of this device must be done in accordance with the NFPA 72 and the local ordinances. For more information, see the Triga Series, ECS Installation Manual PN:LS10262-002TR-E.

**NOTE 2:** \* All references to the TR-125WBD within this document are applicable to the TR-125WHVBD.

### 1.1 Compatibility

The TR-125WBD/TR-125WHVBD are compatible with the Triga Series, Fire Alarm Control Panels (FACP's). For additional information, refer to the following FACP Installation Manuals. The documents are located on the Triga website, www.trigaglobal.com.

Document	Document Part Number
TR-2100ECSR Manual	LS10143-003TR-E
TR-RPS1000 Manual	LS10259-002TR-E
Triga ECS Manual	LS10262-002TR-E

Figure 1 shows the TR-125W mounting bracket.

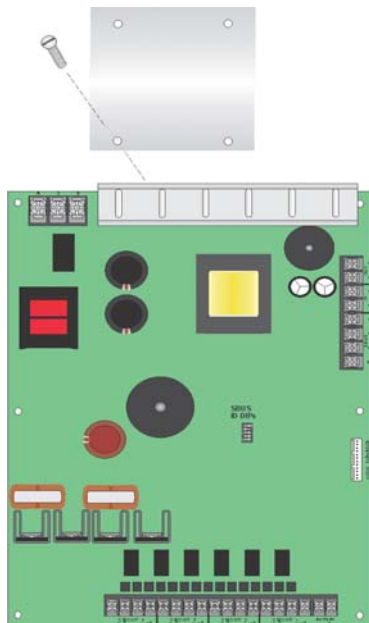


Figure 1 TR-125W Mounting Bracket

## 2 Mounting the TR-125W

1. Make certain the AC and the DC power are removed from the panel.
2. If this module is a replacement for an existing TR-125W, remove the screws which secure the board to the enclosure.
3. Secure the supplied bracket with the two mounting screws to the top mounting bracket on the TR-125W. See Figure 1.
4. Align the mounting holes on the bracket with the enclosure. See Figure 2.
5. Secure the board to the enclosure.
6. Restore the AC power and reconnect the backup batteries.

Figure 2 shows the TR-125W installed to the enclosure.

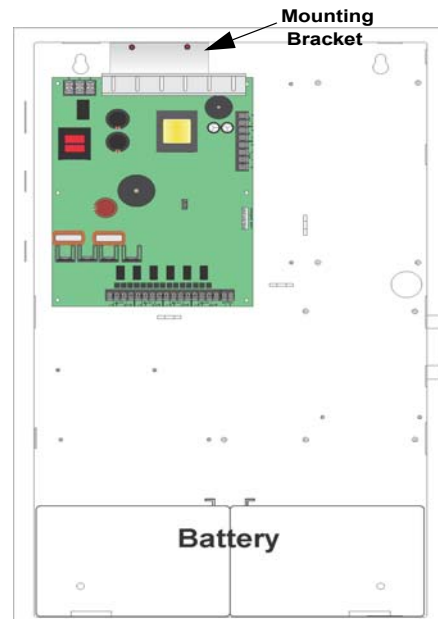


Figure 2 TR-125W Installed in the Enclosure